



**WATER JETTING  
ACCESSORIES & HOSES  
2018**



# INDEX

Item	Page
INDEX .....	1
TRIGGER GUNS .....	3
Trigger Handles Dry Shut* .....	3
Trigger Handles Dump* .....	3
Dry-Shut Gun with Fittings & Lance* .....	3
Dump Gun with Fittings & Lance .....	4
Gun Inlet Fittings* .....	4
Rotating Gun For Use With Tumble Box 2800-3000 Bar.....	5
Deck Cleaner .....	5
Lances* .....	6
SURFACE CLEANER & TANK CLEANER .....	7
Surface Cleaner .....	7
Tank Cleaner .....	7
TUMBLE BOX & FOOT VALVE .....	8
Tumble Box.....	8
Foot Valve.....	8
PRESSURE TEST EQUIPMENT .....	8
Hydrostatic Test Rig.....	8
HOT BOX.....	8
Hot box* .....	8
UNLOADERS & SAFETY VALVES .....	9
Unloaders & Safety Valves .....	9
Rupture Disc Safety Accessories.....	9
ABRASIVE BLASTING .....	10
Sand Blasting Equipment W/O Water Nozzle * .....	10
Water Nozzles Sand Blasting 1/4" BSPT .....	10
Nozzle S.B. Boron Carbid .....	11
Nozzle Adaptors Sand Blasting .....	11
Sand Blasting Attachments.....	11
Abrasive Cutting Equipment .....	12
Abrasive Cutting Nozzle.....	12
Abrasive Nozzle Sapphire.....	12
NOZZLES.....	13
Nozzles Straight Jet 1/4" BSPT Max. 500Bar .....	13
Nozzles Fan Jet 1/4" BSPT Max. 500Bar .....	13
Nozzles Fan Jet 1/8" BSPT Max. 500Bar .....	13
Nozzles Straight Jet Ø8/Ø12-L24 (Form 4) Max.1500Bar .....	14
Nozzles Straight Jet Ø8/Ø12-L24 Sapphire (Form 4) Max.2500 .....	15
Nozzles Sapphire Tapered Ø8/Ø12-L18 Max. 3000 Bar .....	15
Nozzles Fan Jet Ø8/Ø12-L20 (Form 19) Max. 1500 Bar .....	16
Nozzles Fan Jet Ø8/Ø12-L14 Max. 1500 Bar .....	17
Nozzles Sapphire M4 Max. 2800 Bar .....	18
Nozzles Insert M3 Hardened Max. 2800 Bar .....	18
Nozzle Insert M4 Hardened Max. 2800 Bar .....	18
Nozzles Sapphire M12 Max. 3000 Bar .....	18
Nozzles Sapphire 3/8"UNF-24 TPI Max. 3000 Bar .....	19
Nozzles Sapphire M10 (P-type) Max. 3000 Bar.....	19
Rotating Nozzles Tube Cleaning .....	20
Rotating Nozzles Tube Cleaning .....	21
Rotating Nozzles Tube Cleaning .....	21
Nozzle Adaptors Tube cleaning .....	22
Nozzle Adaptors Tube cleaning .....	22
Nozzle Sapphire Insert Tube Cleaning Type D.....	22
Nozzle Insert M6 Ceramic.....	22
Tube Cleaning Nozzles UHP .....	23
Drain Nozzles Carrier HP.....	23
Rotating Nozzles 13/16"UNF F Max 1200 Bar & REP. KIT .....	25
Rotating Nozzles 1/4"BSPP F Max 800 Bar & REP. KIT .....	25
Rotating Nozzles 1/4"BSPP F Max 350 Bar & Rep. Kit .....	26
Rotating Nozzles 1/4"BSPP F Max 255 Bar & Rep. Kit .....	26
Ultra Impact Rotating Nozzles Max 2800 Bar .....	26
Nozzle Carriers-Rotating Gun 9/16"UNF Female inlet.....	27
Nozzle Carriers Single Nozzle .....	28



TUBES & LANCES .....	29
Tubes & Lances* .....	29
HIGH PRESSURE RIGID LANCES .....	30
UHP Lances Both End 9/16"UNF Left-Hand Male Connection .....	30
UHP Lances Both End 9/16"UNF Left-Hand Male Connection .....	31
UHP Lances Both End 9/16"UNF Right-Hand Male Connection .....	31
UHP Lances Both End M14x1,5 Left-Hand Male Connection .....	32
UHP Lances 9/16"UNF Left-Hand - 9/16"UNF Right-Hand Male Connection .....	33
UHP Lances 9/16"UNF Left-Hand - M14x1,5 Left-Hand Male Connection .....	33
ACCESSORIES LOW & HIGH PRESSURE .....	34
Couplings & Connections .....	34
Couplings & Connections .....	35
Swivels .....	36
FITTINGS .....	37
Nipples Stainless Steel High Pressure .....	37
Nipples Stainless Steel High Pressure .....	38
Connectors & Adaptors HP & UHP .....	39
Connectors & Adaptors HP & UHP .....	40
Collar & Gland Nut .....	41
GAUGES & FILTERS .....	42
Gauges H.P .....	42
Gauges L.P .....	43
Filters .....	43
Float Valves .....	43
HIGH PRESSURE HOSES .....	44
T-Connector Ball valve Assembly for Stationary Pipe Line .....	44
Hose End Protection .....	44
Hose Reel .....	44
Hose Reel .....	45
HP Hoses With Same Size Swivel Nut Female Both Ends .....	45
HP Sewer Hoses With Same Size Swivel Nut Both Ends .....	46
HP Hoses Different Size Swivel Nut .....	46
Tube Cleaning Hoses Swivel Nut – Male connection .....	46
HP Hoses Male - Male Ends .....	46
UHP Hoses Both End 9/16"UNF Left-Hand Male Connection .....	47
Hoses Swivel Elbow 3/8"BSPP– Male 3/8"BSPP .....	47
Hoses Both End Male 3/8"BSPP .....	47
UHP Hoses Both End 3/8"UNF Left-Hand Male Connection .....	48
UHP Hoses Both End M14x1.5 Left-Hand Male Connection .....	48
UHP Hoses 9/16"UNF - 3/8"UNF Left-Hand Male Connection .....	48
UHP Hoses Both Ends 1/4"UNF Left Hand Male Connection .....	48
HP Hoses Tube Cleaning .....	48
SAFETY PROTECTION .....	49
Safety Clothing* .....	49
Safety & Service Equipment .....	49

*Contact:*



## TRIGGER GUNS

### Trigger Handles Dry Shut\*

Part No.	Description	Size
81401339	Handle Dry Shut Ultra Impact 4500PSI-310 Bar	Inlet 3/8"BSPP F Outlet Quick Cpl.
81401302	Handle Dry Shut Ultra Impact 7.5kpsi-500 Bar	Inlet 3/8"BSPP F Outlet M24F Screw Cpl.
81400860	Handle Dry Shut 8 kpsi 560 Bar	Inlet 1/2"BSPP F Outlet 1/2"BSPP F
81400666	Handle Dry Shut 15 kpsi 1000 Bar	Inlet 13/16"UNF Gland Nut Outlet 13/16"UNF F



### Trigger Handles Dump\*

Part No.	Description	Size
81400668	Handle Dump 15 kpsi 1000 Bar	Inlet 13/16"UNF Gland Nut Outlet 13/16"UNF F
81400035	Handle Dump 20 kpsi 1400 Bar	Inlet 13/16UNF Gland Nut Outlet 13/16"UNF F
81401783	Handle Dump 40 kpsi 2500Bar	Inlet 1 1/8"UNF F Outlet 1 1/8"UNF F



### Dry-Shut Gun with Fittings & Lance\*

Part No.	Description	Size
81400895	Gun 8kpsi 560Bar	900mm Lance Inlet 1/2"BSPP F Outlet 1/4"BSPP F
81400719	Gun 8kpsi 560Bar	450mm Lance Inlet 1/2"BSPP F Outlet 1/4"BSPP F
81400665	Gun 10kpsi 700Bar	920mm Lance Inlet 13/16"UNF Gland Nut Outlet 1/4" BSPP F
81400667	Gun 15kpsi 1000Bar	920mm Lance Inlet and Outlet 13/16"UNF Gland Nut



1 Bar = 0.1 MPa

1 Bar = 14.5 psi

\*see next page for hose inlet fitting

## TRIGGER GUNS

### Dump Gun with Fittings & Lance

Part No.	Description	Size
81400664	Gun 10kpsi 700Bar	920mm Lance Inlet 13/16"UNF Gland Nut Outlet 1/4" BSPP F
81400669	Gun 15kpsi 1000Bar	920mm Lance Inlet and Outlet 13/16"UNF Gland Nut
81400037	Gun 20kpsi 1400Bar	920mm Lance Inlet and Outlet 13/16"UNF Gland Nut
81400823	Under Water Gun 15kpsi 1000Bar	920mm Lance Inlet and Outlet 13/16"UNF Gland Nut
81400991	Gun 40kpsi 2800Bar	920mm Lance Inlet 1 1/8" UNF F Outlet 1 1/8" UNF M



### Gun Inlet Fittings\*

Part No.	Description	Size
81400026	Connector Straight 20kpsi 1400Bar	13/16"UNF F – Gun Side 13/16"UNF F – Hose Side
80500947	Adaptor Gun 20kpsi1400Bar	13/16"UNF F – Gun Side 1/2"BSPP F – Hose Side
81400416	Adaptor Gun 20kpsi1400Bar	13/16"UNF F – Gun Side 1/2"BSPP M – Hose Side
81400717	Adaptor Gun 20kpsi1400Bar	13/16"UNF F – Gun Side M22x1.5 M – Hose Side
81400716	Adaptor Gun 20kpsi1400Bar	13/16"UNF F – Gun Side M24x1.5 M – Hose Side



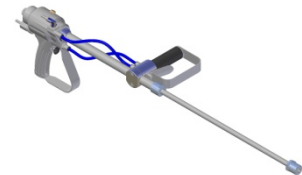
\*Choose your inlet fitting for your need  
Choose nozzle carrier page 27

## TRIGGER GUNS & DECK CLEANER

### Rotating Gun For Use With Tumble Box 2800-3000 Bar

Part No.	Description	Size
81401598	Ultra Impact AIR3000R Bell driven	Inlet 3/4"UNF F
81401151	Ultra Impact 2800R Low Flow 1000mm Self Rotated	Inlet 3/4"UNF F 3/8"UNF Nipple
81401150	Ultra Impact 2800R Standard 1000mm Self Rotated	Inlet 3/4"UNF F 3/8"UNF Nipple
81401152	Ultra Impact 2800 1000mm Without Nozzle	Inlet 3/4"UNF F 3/8"UNF Nipple Outlet 1 1/8"UNF M

\* nozzle carrier can be changed to customer's requirement (see page 26)



### Deck Cleaner

Part No.	Description	Size
81401226	Deck Cleaner Dump Type Self Propelled	1400 Bar
81401227	Deck Cleaner Dump Type Self Propelled	2850 Bar
81401508	Deck Cleaner Air Controlled with Stand alone Tumble box Self Propelled	2850 Bar
81401787	Deck Cleaner Air Controlled with Built on Tumble box Self Propelled	2850 Bar
81401920	Deck Cleaner Dump Type Ultra Impact Self Propelled Asphalt remover	2850 Bar



# LANCES

## Lances\*

Part No.	Description	Size
81401341	Telescopic Lance Alu.	M24 M-1/4"BSPP F 7.2M
81401342	Push-Pull Lance	Quick Coupling 1000mm
81401327	Foam lance long throw 7.5kpsi-500Bar	M24 M 900mm
81401394	Single Barrel Lance 7.5kpsi 500Bar	M24 M-1/4"BSPP F 800mm
81401392	Double Barrel Lance 7.5kpsi 500Bar	M24 M-1/4"BSPP F 650mm
81401345	Double Barrel Lance 7.5kpsi 500Bar	M24 M-1/4"BSPP F 1000mm
81401321	Double Barrel Lance Top regulator 250Bar	Q.C. M-2x1/4"BSPP F 1000mm
81400644	Lance Long 8kpsi 560Bar	1/2"BSPP M-1/4"BSPP F 1000mm
81400645	Lance Short 8kpsi 560Bar	1/2"BSPP M-1/4"BSPP F 450mm
81400708	Lance Long 20 kspi 1400Bar w/ collars & gland nuts	13/16"UNF-13/16"UNF L920mm
81400943	Lance Short 20 kspi 1400Bar w.collars & gland nuts	13/16"UNF-13/16"UNF L460mm
81401153	Lance Long 40 kpsi 2800Bar w.collars & gland nuts	1.1/8UNF-1.1/8UNF L920mm
81400075	Side Handle	M10
81400076	Handle Holder	For 9/16"OD Pipe M10F
81400628	Handle Holder	For 3/8"ID Pipe (17mm) M10F
	Collar	See Fittings page 36
	Gland nut	See Fittings page 36
81400042	Barrel Tube Ø9/16" 20kpsi 1400Bar	See Tube & Lance page 28
81401053	Barrel Tube Ø9/16" 60kpsi 4200Bar	See Tube & Lance page 28

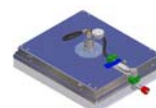
\* Nozzle carrier & Barrel tube machined to customer's requirement



## SURFACE CLEANER & TANK CLEANER

### Surface Cleaner

Part No.	Description	Size
81401298	Surface Cleaner Ø520mm With suction	500 Bar
81401332	Surface Cleaner Ø520mm With suction	350Bar
81401160	Roof Cleaner Round SS	350 Bar
81401295	Roof Cleaner Round SS	500 Bar
81401296	Roof Cleaner 2 jet Universal B5,B6,B7,B9 Square Alu.	500 Bar
81401636	Roof Cleaner 4 jet Universal B5,B6,B7,B9 Square Alu.	500 Bar
81401297	Edge cleaner Square Alu.	500 Bar
81401367	Moos Scraper B5,B6,B7,B9	6 m
81401159	Surface Graffiti Cleaner	500 Bar
81401347	VACCUM CLEANER HIGH FLOW	1500 W



### Tank Cleaner

Part No.	Description	Size
81501093	Tank Cleaner	Max. 400 Bar Max. 200l/min
81501094	Tank Cleaner	Max. 200 Bar Max. 200l/min
81401230	Tank Cleaner 3D	Max 400L/M Max1500 Bar
81401231	Nozzle Manifold 3D	30-115 L/M
81401232	Nozzle Manifold 3D	115-190 L/M
81401233	Nozzle Manifold 3D	190-400 L/M
81101293	Membrane Suction Pump Electric	
81101297	Membrane Suction Pump Gazolin	

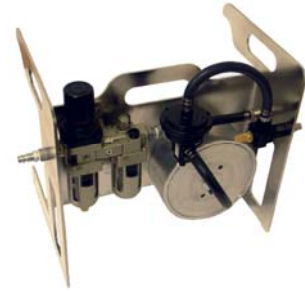




## TUMBLE BOX & FOOT VALVE

### Tumble Box

Part No.	Description	Size
81300664	Tumble Box Air Operated Unloader Valve, Dump Type Inlet 1 1/8"UNF Outlet 1 1/8"UNF Or Outlet 3/4"UNF	L x B x H 338 x 240 x 307
81300803	Tumble Box Air Operated Unloader Valve, Dump Type Inlet 3/4"BSPP Outlet 3/4"BSPP	L x B x H 338 x 240 x 307



### Foot Valve

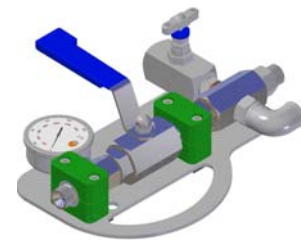
Part No.	Description	Size
81400868	Foot Valve	10-15KPSI DUMP
81400867	Foot Valve	20KPSI DUMP
81400870	Foot Valve	15KPSI DRY SHUT
81401235	Foot Valve	40KPSI DUMP



## PRESSURE TEST EQUIPMENT

### Hydrostatic Test Rig

Part No.	Description	Size
81300637	Hydrostatic Test Rig Stainless Steel	500 Bar Inlet-Outlet 1/2" BSPP M
81300638	Hydrostatic Test Rig Stainless Steel	800 Bar Inlet-Outlet 1/2" BSPP M



## HOT BOX

### Hot box\*

Part No.	Description	Size
81401337	Hot Box 220V	200 Bar
81401343	Hot Box 220V	300 Bar
81400965	Hot Box 220V	500 Bar
81401170	Hot Box 220V	700 Bar



\*Also available in 12V DC

## UNLOADERS & SAFETY VALVES

### Unloaders & Safety Valves

Part No.	Description	Size
81300787	Unloader BXX 600 Bar	inlet-outlet-dump 1/2"BSPP FFF
81300790	Rep.Kit unloader BXX 600bar	
81300634	Unloader and Safety Valve 500 Bar without Gauge	inlet-outlet-dump 1/2"BSPP MMM Gauge-port 1/4"BSPP F
81300544	Unloader 500 Bar	inlet-outlet-dump 1/2"BSPP FFF
81300695	Safety Valve 500 Bar	inlet-dump 1/2"BSPP FF
81300600	Unloader 350 Bar	inlet -outlet-dump 3/8"BSPP MFF Gauge-port 1/4"BSPP F
81300498	Safety Valve 1250 Bar	Inlet Tapered 1/2"BSPP M
81300599	Safety Valve 350 Bar	inlet-inlet-dump 3/8"BSPP FFF
81300730	Unloader 150Bar - 80 L/min	inlet-outlet-dump 1/2" NPT – FFF
81300701	Unloader /Relief Valve 150 Bar 200l/min	inlet-outlet-dump 1" NPT – FFF
81300805	Check Valve 6000PSI 400Bar	3/8" BSPP F-F
81400804	Check Valve 15000 PSI 1000 Bar	3/8" BSPP F-F



### Rupture Disc Safety Accessories

Part No.	Description	Size
81300772	Rupture Disc Assembly	3/8" BSPP M
81300770	Rupture Disc Assembly	3/4" UNF F
81300738	Rupture Disc Assembly	13/16" UNF M
81300644	Rupture Disc Assembly	1/2" BSPP M
81300686	Rupture Disc Seal Washer Assembly	1/2" BSPP M
81300643	Rupture Disc Assembly	1.1/8"UNF M
81300645	Rupture Disc White	WP 500 Bar 11000 PSI
81300646	Rupture Disc Blank	WP 800 Bar 15000 PSI
81300677	Rupture Disc Green	WP1000 Bar 18000 PSI
81300647	Rupture Disc Yellow	WP1250 Bar 21000 PSI
81300702	Rupture Disc Purple	WP1500 Bar 25000 PSI
81300648	Rupture Disc Blue	WP 2000 Bar 37000 PSI
81300652	Rupture Disc Black	WP 2500 Bar 41000 PSI
81300635	Rupture Disc Red	WP 2800 Bar 43000 PSI
81300761	Rupture Disc Orange	WP 3000 Bar 45000 PSI
81300762	Rupture Disc Brown	WP 3000 Bar 50000 PSI



## ABRASIVE BLASTING

### Water Blaster

#### Sand Blasting Equipment W/O Water Nozzle \*

Part No.	Description	Size
81400654	Sand Blasting Kit With Poker max.800bar	Inlet 1/4"BSPP
81400655	Sand Blasting Kit With Poker max.1400bar	Inlet 9/16"UNF



\* Remember to order water SB nozzle see below

#### Sand Blasting Venturi Assembly W/O Water Nozzle\*

Part No.	Description	Size
81400642	Venturi Housing Assembly max.1400bar	F9/16"UNF Inlet
81400643	Venturi Housing Assembly max.800bar	F1/4"BSPP Inlet



\* Remember to order water SB nozzle see below

#### Water Nozzles Sand Blasting 1/4" BSPT

Part No.	Description	Size*
81501064	Nozzle	02
81500701	Nozzle	025
81500666	Nozzle	03
81500702	Nozzle	035
81500653	Nozzle	04
81500688	Nozzle	045
81500696	Nozzle	05
81500676	Nozzle	055
81500677	Nozzle	06
81500780	Nozzle	07
81500661	Nozzle	075
81500699	Nozzle	08
81500700	Nozzle	09



\*Nozzle size xx uuu (xx jet angle uuu nozzle size)



## ABRASIVE BLASTING

### Nozzle S.B. Boron Carbide

Part No.	Description	Size
81500567	Boron Carbide Nozzle	



### Nozzle Adaptors Sand Blasting

Part No.	Description	Size
81400631	Nozzle Adaptor 20KPSI(1400Bar)	Inlet 13/16"UNF F Nozzle 1/4"BSPP F For Venturi Housing
81400472	Nozzle Adaptor 7500PSI(500Bar)	Inlet 1/4"BSPP F Nozzle 1/4"BSPP F For Venturi Housing



### Sand Blasting Attachments

Part No.	Description	Size
83400596	Hose*	Ø3/4" Length in meters
81400629	Poker Complete	Ø 19mm
81400641	Grit Container	120 liter
81402077	Grit Container Complete (with wheels and handle)	120 liter



\* Customer's Requirement, but standard 12.5m

## ABRASIVE CUTTING EQUIPMENT

### Abrasive Cutting Equipment

Part No.	Description
81401173	Abrasive Cutting Head
81401028	Abrasive Cutting Hopper With Control Panel and Vibrator
81400952	Abrasive Power Head(Slow) Pneumatic
81401395	Linear Cutting Track 2.5m On Foot



### Abrasive Cutting Nozzle

Part No.	Description	Size
81400928	Abrasive Cutting Nozzle	0,094"(2.40mm)
81401042	Abrasive Cutting Nozzle	0,125"(3.2mm)



### Abrasive Nozzle Sapphire

see page 15 Nozzles Sapphire Tapered

## NOZZLES

### Nozzles Straight Jet 1/4" BSPT Max. 500Bar

Part No.	Description	Size*
81501428	Nozzle	02
81500650	Nozzle	025
81500627	Nozzle	03
81500629	Nozzle	035
81500631	Nozzle	04
81500633	Nozzle	045
81500638	Nozzle	05
81500635	Nozzle	055
81500639	Nozzle	06
81500703	Nozzle	065
81500641	Nozzle	07
81500643	Nozzle	075
81500649	Nozzle	08
81500689	Nozzle	09
81500762	Nozzle	20
81501395	Nozzle	10
81501492	Nozzle	12
81501184	Nozzle	40



### Nozzles Fan Jet 1/4" BSPT Max. 500Bar

Part No.	Description	Size*
81501427	Nozzle	1502
81500651	Nozzle	15025
81500628	Nozzle	1503
81500630	Nozzle	15035
81500632	Nozzle	1504
81500637	Nozzle	15045
81500634	Nozzle	1505
81500636	Nozzle	15055
81500640	Nozzle	1506
81500704	Nozzle	15065
81500642	Nozzle	1507
81500644	Nozzle	15075
81500648	Nozzle	1508
81500946	Nozzle	1509
81501185	Nozzle	1510
81501186	Nozzle	1515
81501410	Nozzle	25065
81500647	Nozzle	4002
81500652	Nozzle	40025



### Nozzles Fan Jet 1/8" BSPT Max. 500Bar

Part No.	Description	Size*
81501193	Nozzle	1502
81501174	Nozzle	1503
81501175	Nozzle	15035
81501176	Nozzle	1504



\*Nozzle size xx uuu (xx jet angle uuu nozzle type )  
Other sizes available on request

## NOZZLES

### Nozzles Straight Jet Ø8/Ø12-L24 (Form 4) Max.1500Bar

Part No.	Description	Size mm
81500974	Nozzle	0.40
81500975	Nozzle	0.50
81500976	Nozzle	0.60
81500883	Nozzle	0.65
81500733	Nozzle	0.70
81500727	Nozzle	0.75
81500726	Nozzle	0.80
81500681	Nozzle	0.85
81500680	Nozzle	0.90
81500670	Nozzle	0.95
81500671	Nozzle	1.00
81500743	Nozzle	1.05
81500672	Nozzle	1.10
81500886	Nozzle	1.15
81500763	Nozzle	1.20
81500940	Nozzle	1.25
81500884	Nozzle	1.30
81500885	Nozzle	1.35
81500813	Nozzle	1.40
81500824	Nozzle	1.45
81500815	Nozzle	1.50
81500390	Nozzle	1.60
81500764	Nozzle	1.70
81500388	Nozzle	1.80
81501033	Nozzle	1.90
81500386	Nozzle	2.00
81501225	Nozzle	4.00
81500907	Nozzle Plug	

Order P/N 80200623 O-RING always with nozzle for our machines

Other sizes available on request



## NOZZLES

### Nozzles Straight Jet Ø8/Ø12-L24 Sapphire (Form 4) Max.2500

Part No.	Description	Size In(mm)
81500860	Nozzle	0.011"(0.28)
81500720	Nozzle	0.028"(0.70)
81500721	Nozzle8	0.03"(0.75)
81500719	Nozzle	0.031"(0.80)
81500722	Nozzle	0.033"(0.85)
81500718	Nozzle	0.036"(0.90)
81500724	Nozzle	0.037"(0.95)
81500716	Nozzle	0.039"(1.00)
81500725	Nozzle	0.04"(1.05)
81500717	Nozzle	0.043"(1.10)
81500816	Nozzle	0.047"(1.20)
81500862	Nozzle	0.052"(1.30)
81500858	Nozzle	0.055"(1.40)
81500807	Nozzle	0.059"(1.50)
81500808	Nozzle	0.063"(1.60)
81500856	Nozzle	0.067"(1.70)
81500809	Nozzle	0.071"(1.80)
81500752	Nozzle	0.079"(2.00)
81500753	Nozzle	0.083"(2.10)
81500754	Nozzle	0.087"(2.20)
81500890	Nozzle	0.09"(2.30)
81500817	Nozzle	0.095"(2.40)
81500818	Nozzle	0.102"(2.60)
81500835	Nozzle	0.11"(2.80)
81500810	Nozzle	0.118"(3.00)

Order P/N 80200623 O-RING always with nozzle for our machines



### Nozzles Sapphire Tapered Ø8/Ø12-L18 Max. 3000 Bar

Part No.	Description	Size In(mm)
81500879	Nozzle	0.028"(0.70)
81500707	Nozzle	0.031"(0.80)
81500664	Nozzle	0.033"(0.85)
81500663	Nozzle	0.036"(0.90)
81500949	Nozzle	0.037"(0.95)
81500770	Nozzle	0.039"(1.00)
81501070	Nozzle	0.043"(1.10)
81500934	Nozzle	0.047"(1.20)
81501091	Nozzle	0.052"(1.30)
81501188	Nozzle	0.055"(1.40)
81501189	Nozzle	0.063"(1.60)
81501190	Nozzle	0.067"(1.70)
81500880	Nozzle	0.071"(1.80)
81501191	Nozzle	0.075"(1.90)



Other sizes available on request



## NOZZLES

### Nozzles Fan Jet Ø8/Ø12-L20 (Form 19) Max. 1500 Bar

Part No.	Description	Size
		Angle° mm
81500887	Nozzle	20° 0.80
81500888	Nozzle	20° 0.85
81500728	Nozzle	20° 0.90
81500889	Nozzle	20° 0.95
81500682	Nozzle	20° 1.00
81500713	Nozzle	20° 1.05
81500793	Nozzle	20° 1.10
81500673	Nozzle	20° 1.15
81500674	Nozzle	20° 1.20
81500772	Nozzle	20° 1.25
81500675	Nozzle	20° 1.30
81500773	Nozzle	20° 1.35
81500765	Nozzle	20° 1.40
81500774	Nozzle	20° 1.45
81501545	Nozzle	20° 1.50
81500775	Nozzle	20° 1.55
81500747	Nozzle	20° 1.60
81500776	Nozzle	20° 1.65
81500766	Nozzle	20° 1.70
81500777	Nozzle	20° 1.75
81500389	Nozzle	20° 1.80
81500778	Nozzle	20° 1.85
81500767	Nozzle	20° 1.90
81500779	Nozzle	20° 1.95
81500387	Nozzle	20° 2.00
81500769	Nozzle	20° 2.10
81501595	Nozzle	20° 2.20
81500823	Nozzle	20° 2.25
81500857	Nozzle	20° 2.60
81501539	Nozzle	20° 2.80
81501550	Nozzle	20° 3.30
81501551	Nozzle	20° 3.40
81501552	Nozzle	20° 3.60
81501553	Nozzle	20° 3.80
81501406	Nozzle	20° 4.00

Order P/N 80200623 O-RING always with nozzle for our machines



## NOZZLES

Nozzles Fan Jet Ø8/Ø12-L14 Max. 1500 Bar

Part No.	Description	Size	
		Angle°	mm
81500612	Nozzle	20	0.25
81500665	Nozzle	20	0.30
81501221	Nozzle	20	0.35
81500658	Nozzle	20	0.40
81501222	Nozzle	20	0.45
81500656	Nozzle	20	0.50
81501071	Nozzle	20	0.60
81500951	Nozzle	20	0.70
81501223	Nozzle	20	0.80
81501069	Nozzle	40	0.70
81500683	Nozzle	45	0.70
81500684	Nozzle	45	1.20

Order P/N 80200623 O-RING always with nozzle for our machines



## NOZZLES

### Nozzles Sapphire M4 Max. 2800 Bar

Part No.	Description	Size in(mm)
81500615	Nozzle	0.004"(0.10)
81500616	Nozzle	0.0048"(0.12)
81500929	Nozzle	0.012"(0.30)
81500984	Nozzle	0.016"(0.40)
81500869	Nozzle	0.023"(0.60)
81500846	Nozzle	0.027"(0.70)
81500914	Nozzle	0.035"(0.90)
81500915	Nozzle	0.040"(1.00)



### Nozzles Insert M3 Hardened Max. 2800 Bar

Part No.	Description	Size mm
81501136	Nozzle	0.3
81501137	Nozzle	0.4
81501138	Nozzle	0.5
81501139	Nozzle	0.6
81501140	Nozzle	0.7
81501220	Nozzle	1.0
81501490	Nozzle	1.1
81501491	Nozzle	1.2



### Nozzle Insert M4 Hardened Max. 2800 Bar

Part No.	Description	Size mm
81501261	Nozzle	0.25
81501260	Nozzle	0.30
81501259	Nozzle	0.40
81501100	Nozzle	0.50
81501239	Nozzle	0.60
81501085	Nozzle	0.70
81501086	Nozzle	0.75
81501097	Nozzle	0.80
81501098	Nozzle	0.90
81501051	Nozzle	1.00
81500850	Nozzle	1.10
81500851	Nozzle	1.20
81500852	Nozzle	1.30
81500853	Nozzle	1.40
81500854	Nozzle	1.50
81501268	Nozzle	1.60



### Nozzles Sapphire M12 Max. 3000 Bar

Part No.	Description	Size in(mm)
81500829	Nozzle	0.010"(0.25)
81500830	Nozzle	0.012"(0.30)
81500831	Nozzle	0.014"(0.35)
81500863	Nozzle	0.016"(0.40)
81500832	Nozzle	0.020"(0.50)
81501107	Nozzle	0.035"(0.90)
81501108	Nozzle	0.039"(1.00)
81501429	Nozzle	0.043"(1.10)
81500834	Nozzle Plug	
81500833	Nozzle Seal	M12



## NOZZLES

### Nozzles Sapphire 3/8"UNF-24 TPI Max. 3000 Bar

Part No.	Description	Size in(mm)
81500137	Nozzle Plug	
81500723	Nozzle	0.010"(0.25)
81500613	Nozzle	0.012"(0.30)
81500594	Nozzle	0.013"(0.33)
81500595	Nozzle	0.014"(0.35)
81500614	Nozzle	0.016"(0.40)
81500592	Nozzle	0.018"(0.45)
81500593	Nozzle	0.020"(0.50)
81500961	Nozzle	0.022"(0.55)
81500729	Nozzle	0.024"(0.60)
81500596	Nozzle	0.026"(0.65)
81500597	Nozzle	0.028"(0.70)
81501106	Nozzle	0.0295"(0.75)
81500788	Nozzle	0.031"(0.80)
81500645	Nozzle	0.036"(0.90)
81501431	Nozzle	0.040"(1.00)
81501017	Nozzle	0.043"(1.10)
81501433	Nozzle	0.050"(1.25)
81501434	Nozzle	0.065"(1.60)



### Nozzles Sapphire M10 (P-type) Max. 3000 Bar

Part No.	Description	Size in(mm)
81500826	Nozzle	0.004"(0.10)
81500828	Nozzle	0.005"(0.12)
81501067	Nozzle	0.006"(0.15)
81501173	Nozzle	0.007"(0.18)
81500598	Nozzle	0.008"(0.20)
81500599	Nozzle	0.010"(0.25)
81500600	Nozzle	0.012"(0.30)
81500601	Nozzle	0.014"(0.35)
81500602	Nozzle	0.016"(0.40)
81500603	Nozzle	0.018"(0.45)
81500604	Nozzle	0.020"(0.50)
81500605	Nozzle	0.022"(0.55)
81500606	Nozzle	0.024"(0.60)
81500910	Nozzle	0.026"(0.65)
81500711	Nozzle	0.0275"(0.70)
81500782	Nozzle	0.030"(0.75)
81500983	Nozzle	0.031"(0.80)
81500786	Nozzle	0.033"(0.85)
81500730	Nozzle	0.036"(0.90)
81500897	Nozzle	0.037"(0.95)
81500742	Nozzle	0.039"(1.00)
81501230	Nozzle	0.043"(1.10)
81500787	Nozzle	0.047"(1.20)
81500916	Nozzle Plug	



## NOZZLES

### Rotating Nozzles Tube Cleaning

Part No.	Description	Size**
81501209	Nozzle OD 28 3/8BSPP F Max. 300 Bar	2S+2R 08
81500924	Nozzle OD 10 M7 F Max. 1000 Bar	2Sx0.7mm 025
81500925	Nozzle OD 10 M7 F Max. 1000 Bar	2Sx0.8mm 030
81501192	Nozzle OD 10 M7 F Max. 1000 Bar	2Sx1.0mm 040
81500868	Nozzle OD 12 1/8"BSPP F Max. 1000 Bar	2Sx0.7mm 025
81500825	Nozzle OD 12 1/8"BSPP F Max. 1000 Bar	2Sx0.8mm 030
81501113	Nozzle OD 12 1/8"BSPP F	2Sx1.0mm 055
81501006	Nozzle OD 12 1/8"BSPP F	2Sx 1.1mm 060
81501007	Nozzle OD 12 1/8"BSPP F	2S+2R 085
81501073	Nozzle OD 18 1/4"BSPP F Max. 1000 Bar	2S+2R 025
81500967	Nozzle OD 18 1/4"BSPP F Max. 1000 Bar	2Sx0.7mm 030
81500968	Nozzle OD 18 1/4"BSPP F	2S+2R 13
81501008	Nozzle OD 18 1/4"BSPP F	2S 085
81501009	Nozzle OD 18 1/4"BSPP F	2S+2R 085
81501096	Nozzle OD 18 1/4"BSPP F Max. 1000 Bar	2Sx0.6mm 025
81501122	Nozzle OD 18 1/4"BSPP F Max. 1000 Bar	2Sx1.1mm 065
81501141	Nozzle OD 18 1/4"BSPP F	2Sx0.5mm 020
81501010	Nozzle OD 22 1/4"BSPP F	2S 09
81501011	Nozzle OD 22 1/4"BSPP F	2S+2R 09
81500935	Nozzle OD 22 1/4"BSPP F Max. 1000 Bar	2Sx0.8mm 05
81501095	Nozzle OD 22 1/4"BSPP F Max. 1000 Bar	2Sx1.0 060
81501133	Nozzle OD 22 1/4"BSPP F	2Sx0.5 025
81501209	Nozzle OD 28 3/8"BSPP F	2S 08
81500995	Nozzle OD 47 M22x1.5 F Max. 1000 Bar	2Sx0.5mm 025
81500996	Nozzle OD 47 M22x1.5 F Max. 1000 Bar	2Sx0.7mm 03
81501031	Nozzle OD 47 M22x1.5 F Max. 1000 Bar	2Sx0.9mm 07
81501012	Nozzle OD 47 M22x1.5 F Max. 1000 Bar	60L/M 085
81501013	Nozzle OD 47 M22x1.5 F	2S+2R 085
81501135	Nozzle OD 47 M22x1.5 F	2Sx0.4 020



## NOZZLES

### Rotating Nozzles Tube Cleaning

Part No.	Description	Size**
81501037	Nozzle OD 28 1/4"BSPP F Max. 1000 Bar	2S/40° 2S/80°
81501038	Nozzle OD 40 M24F Max. 1000 Bar	2S/40° 2S/80°
81501113	Nozzle OD 12 1/8"BSPP F	35L/M 800Bar 2Sx1mm
81500825	Nozzle OD 12 1/8"BSPP F	20L/M 1000Bar 2Sx0.8mm
81500868	Nozzle OD 12 1/8"BSPP F	16L/M 1000Bar 2Sx0.7mm
81501006	Nozzle OD 12 1/8"BSPP F	40L/M 2S
81501007	Nozzle OD 12 1/8"BSPP F	60L/M 2S+2R
81501131	Rotor OD12	2Sx1mm
81501121	Nozzle OD 20 9/16"UNF LH F Max. 2500 Bar	2SxM3*
81501169	Nozzle OD 20 1/4"BSPP F Max. 1000 Bar	2SxM3*
81501148	Rotor OD20	2SxM3*
80100618	Copper Washer	1/4"BSP Hole
80100760	Copper Washer	M7/M8 Hole
80100761	Copper Washer	1/8"BSP Hole
80100791	Copper Washer	M22 Hole

\*See Nozzle M3 list

\*\*S: side jet R: rear jet



### Rotating Nozzles Tube Cleaning

Part No.	Description	Size
81500990	Nozzle Rot. Tube40kpsi	
81500991	Head Rot. Tube Nozzle	
81500997	Spider Centralizer	Ø200/400



## NOZZLES

### Nozzle Adaptors Tube cleaning

Part No.	Description	Size
81501055	ROT.TUBE NOZZLE 40KPSI	Ø17.6mm 22 - 38mm tube
81501056	HEAD POLISHER 40KPSI	Ø17.6mm 22 - 38mm tube



### Nozzle Adaptors Tube cleaning

Part No.	Description	Size
80500830	Adaptor Rotating Nozzle	M8 F - 1/8"BSPP M 100mm
80500832	Adaptor Rotating Nozzle	M8 F - 1/8"BSPP M 60mm
80500833	Adaptor Rotating Nozzle	M8 F - 1/8"BSPP M 28mm



### Nozzle Sapphire Insert Tube Cleaning Type D

Part No.	Description	Size in(mm)
81500789	Nozzle	0.016"(0.40)
81500734	Nozzle	0.018"(0.45)
81500735	Nozzle	0.020"(0.50)
81500790	Nozzle	0.022"(0.55)
81500791	Nozzle	0.024"(0.60)
81500736	Nozzle	0.025"(0.65)



### Nozzle Insert M6 Ceramic

Part No.	Description	Size mm
81500998	Nozzle	0.50
81500999	Nozzle	0.60
81501000	Nozzle	0.70
81501001	Nozzle	0.80
81501002	Nozzle	0.90
81501003	Nozzle	1.00
81501004	Nozzle	1.10
81501032	Nozzle	1.20
81501041	Nozzle	1.30
81501062	Nozzle	1.40
81501063	Nozzle	1.50



## NOZZLES

### Tube Cleaning Nozzles UHP

Part No.	Description	Size*
81500737	Nozzle Carrier 3/8" UNF F inlet	3 Front Jets 30°
81500738	Nozzle Carrier 3/8" UNF F inlet	2 Front Jets 45°
81500739	Nozzle Carrier 9/16"UNF F inlet	2 Front Jets 60° 2 Rear Jets 30°
81400470	Brass Button	9/16" TUBE
81400011	Brass Button	3/8" TUBE



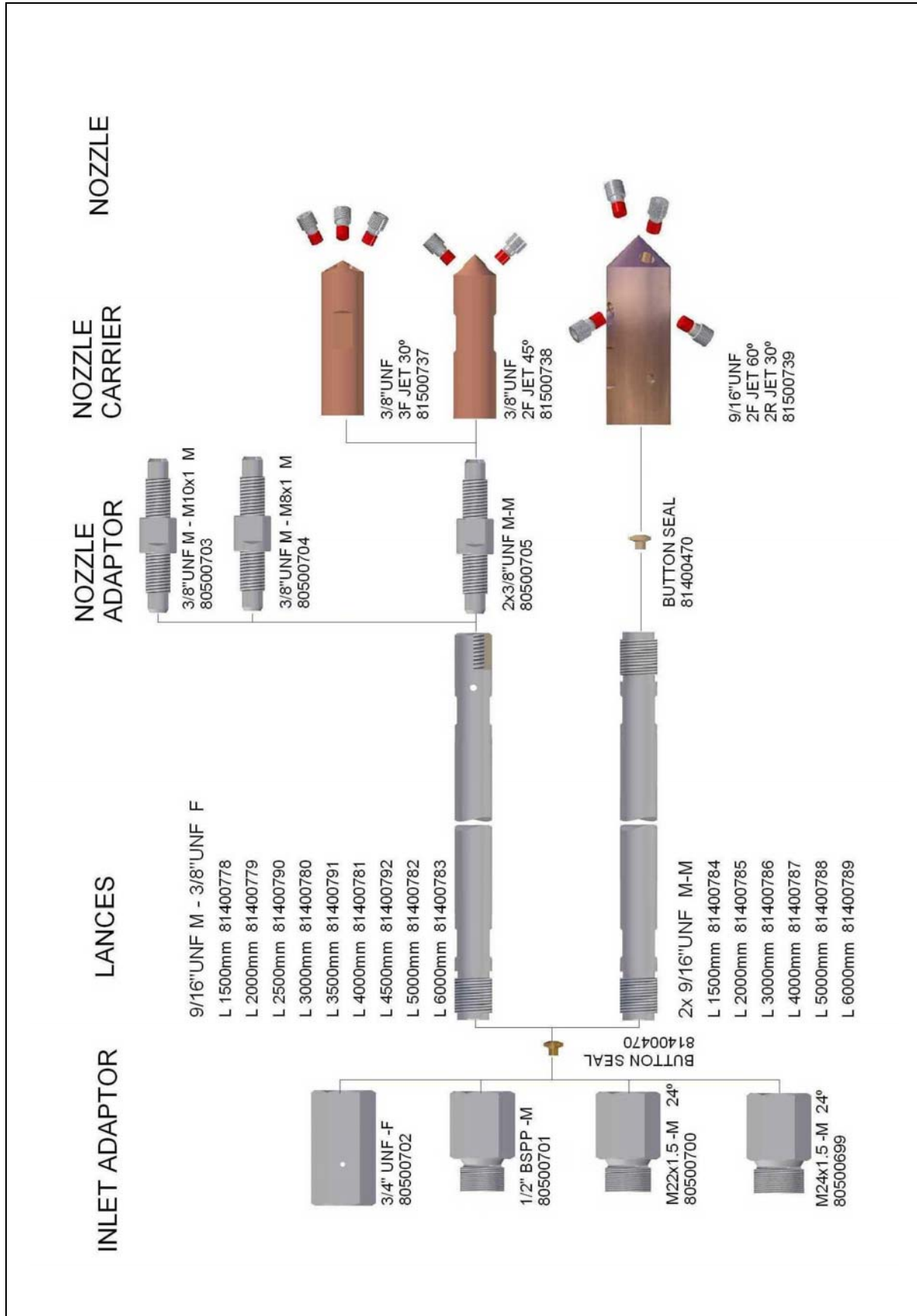
### Drain Nozzles Carrier HP

Part No.	Description	Size*
81501043	Drain Nozzle Ø17 1/4" BSPP inlet	3x M4 Rear Jet 1x M4 Front Jet
81501044	Drain Nozzle Ø17 1/4" BSPP inlet	3x M4 Rear Jet No Front Jet
81501016	Drain Nozzle Ø17 1/4" BSPP inlet	3x M6 Rear Jet 1xM6 Front Jet
81501049	Drain Nozzle Ø17 1/4" BSPP inlet	6x M6 Rear Jet 1xM6 Front Jet





# NOZZLE RIGID LANCES\*



\*Please contact us to find out the price of the required combination

## NOZZLES

### Rotating Nozzles 13/16"UNF F Max 1200 Bar & REP. KIT

Part No.	Description	Size
81500760	Rot. Nozzle	014
81500761	Rep. Kit	014
81500758	Rot. Nozzle	018
81500759	Rep. Kit	018
81500855	Rot. Nozzle	02
81500861	Rep. Kit	02
81500805	Rot. Nozzle	025
81500801	Rep. Kit	025
81500804	Rot. Nozzle	03
81500802	Rep. Kit	03
81500803	Rot. Nozzle	035
81500800	Rep. Kit	035
81500847	Rot. Nozzle	055
81500917	Rep. Kit	055
81501143	Rot. Nozzle	075
81501216	Rot. Nozzle	080



### Rotating Nozzles 1/4"BSPP F Max 800 Bar & REP. KIT

Part No.	Description	Size
81500698	Rot. Nozzle	02
81500708	Rep. Kit	02
81500697	Rot. Nozzle	025
81500669	Rep. Kit	025
81500668	Rot. Nozzle	03
81500667	Rep. Kit	03
81500618	Rot. Nozzle	035
81500620	Rep. Kit	035
81500785	Rot. Nozzle	04
81500784	Rep. Kit	04
81500795	Rot. Nozzle	045
81500783	Rep. Kit	045
81500893	Rot. Nozzle	05
81500913	Rep. Kit	05
81500756	Rot. Nozzle	055
81500755	Rep. Kit	055
81501178	Rot. Nozzle	06
81501179	Rep. Kit	06
81500619	Rot. Nozzle	065
81500621	Rep. Kit	065
81501246	Rot. Nozzle	070
81501248	Rep. Kit	070
81500954	Rot. Nozzle	075
81501142	Rep. Kit	075
81500849	Rot. Nozzle	08
81500939	Rep. Kit	08
81501075	Rot. Nozzle	09
81501237	Rot. Nozzle	10



## NOZZLES

### Rotating Nozzles 1/4" BSP F Max 350 Bar & Rep. Kit

Part No.	Description	Size
81500871	Rot. Nozzle	03
81500873	Rep. Kit	03
81500870	Rot. Nozzle	035
81500872	Rep. Kit	035
81500904	Rot. Nozzle	04
81500905	Rep. Kit	04
81500692	Rot. Nozzle	045
81500693	Rep. Kit	045
81500690	Rot. Nozzle	05
81500691	Rep. Kit	05
81500964	Rot. Nozzle	055
81500965	Rep. Kit	055
81500710	Rot. Nozzle	06
81500709	Rep. Kit	06
81500959	Rot. Nozzle	065
81500958	Rep. Kit	065
81500930	Rot. Nozzle	08
81500874	Rep. Kit	08
81500694	Rot. Nozzle	09
81500695	Rep. Kit	09
81501258	Rot. Nozzle	11
81501405	Rep. Kit	11
81501092	Rot. Nozzle	12
81500942	Rot. Nozzle	15
81500943	Rep. Kit	15
81501060	Rot. Nozzle	25



### Rotating Nozzles 1/4" BSP F Max 255 Bar & Rep. Kit

Part No.	Description	Size
81500875	Rot. Nozzle	045
81500876	Rep. Kit	045
81501203	Rot. Nozzle	05
81501204	Rep. Kit	05
81501205	Rot. Nozzle	055
81501206	Rep. Kit	055
81501207	Rot. Nozzle	06
81501208	Rep. Kit	06
81501199	Rot. Nozzle	08
81501200	Rot. Nozzle	15



### Ultra Impact Rotating Nozzles Max 2800 Bar

Part No.	Description	Size
81501029	Nozzle LF Modified	
81501030	Nozzle Standard Modified	
81500944*	Nozzle Adaptor	7/16" UNF M - 3/8" UNF F
81501451	Wear Cap ALU. For Extended Nozzles	
80500891**	Adaptor 20 kpsi	1 1/8" UNF M - 13/16" UNF F

\*See nozzle 3/8" UNF page 18

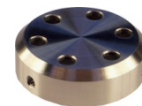
\*\* Used only with DenJet dump gun 15&20kpsi



## NOZZLES

### Nozzle Carriers-Rotating Gun 9/16"UNF Female inlet

Part No.	Description	Size
81500028	Nozzle Carrier x 4 narrow angle Complete	9/16" UNF F 4 x 3/8"UNF
81500609	Nozzle Carrier x4 narrow angle complete	9/16" UNF 4 x M10
81500679	Nozzle Carrier x 4 narrow angle	M14 X1.5 RH 4X M10
81500608	Nozzle Carrier x5 various angle Complete 75mm	9/16" UNF F 5 x 3/8"UNF
81501050	Nozzle Carrier x5 various angle Complete 100mm	9/16" UNF F 5 x 3/8"UNF
81500611	Nozzle Carrier x5 various angle Complete 75mm	9/16" UNF F 5xM10
81500294	Protection Guard	
81500740	Nozzle Carrier x6 various angle	9/16" RH 6x M10
81500741	Protection Guard	



Other nozzle carrier available on request

## NOZZLES

### Nozzle Carriers Single Nozzle

Part No.	Description	Size
81500128	Nozzle Carrier 20kpsi	13/16"UNF F - 1/4" BSPP F
81500129	Nozzle Carrier 20kpsi	13/16"UNF F - 1/4" NPT F
81500441	Nozzle Carrier 20 KPSI	13/16" UNF F - 3/8"UNF F
81500442	Nozzle Carrier 40 KPSI	1.1/8"UNF F - 3/8"UNF F
81500046	Nozzle Carrier Comp. * 20kpsi	13/16"UNF F- Form 4 (Ø8/Ø12)
81500821	Nozzle Carrier Comp. * 20kpsi	1/4" BSPP F Form 4(Ø8/Ø12)
81500705	Nozzle Carrier Comp. * 20kpsi	3/8" BSPP F- Form 4(Ø8/Ø12)
81500812	Nozzle Carrier Comp. * 20kpsi	9/16" UNF LH F - Form 4(Ø8/Ø12)
81500957	Nozzle Carrier Knurled Comp. 20kpsi	3/8" BSPP F- Form 4 (Ø8/Ø12)
81500623	Nozzle Carrier	3/8" BSPP F- 1/4"BSPP F



1 Bar = 0.1 MPa  
1 Bar = 14.5 psi

## TUBES & LANCES

### Tubes & Lances\*

Part No.	Description	Size
83000084	Tube 60kpsi	OD 9/16" - ID 3/16"
83000043	Tube 30kpsi	OD 9/16" - ID 5/16"
83000597	Tube 60kpsi	OD 3/8" - ID 1/8"
81400778	Rigid Lance Tube 1500mm	9/16"M - 3/8"F UNF
81400779	Rigid Lance Tube 2000mm	9/16"M - 3/8"F UNF
81400790	Rigid Lance Tube 2500mm	9/16"M - 3/8"F UNF
81400780	Rigid Lance Tube 3000mm	9/16"M - 3/8"F UNF
81400791	Rigid Lance Tube 3500mm	9/16"M - 3/8"F UNF
81400781	Rigid Lance Tube 4000mm	9/16"M - 3/8"F UNF
81400782	Rigid Lance Tube 5000mm	9/16"M - 3/8"F UNF
81400783	Rigid Lance Tube 6000mm	9/16"M - 3/8"F UNF
81400784	Rigid Lance Tube 1500mm	9/16"M - 9/16"M UNF
81400785	Rigid Lance Tube 2000mm	9/16"M - 9/16"M UNF
81400786	Rigid Lance Tube 3000mm	9/16" UNF LH W. Spanner Width
81400792	Rigid Lance Tube 4500mm	9/16"M - 3/8" UNF
81400787	Rigid Lance Tube 4000mm	9/16"M - 9/16"M UNF
81400788	Rigid Lance Tube 5000mm	9/16"M - 9/16"M UNF
81400789	Rigid Lance Tube 6000mm	9/16"M - 9/16"M UNF
81400726	Rigid Lance Tube Ø10/5mm	1/8" BSPT
81400042	Barrel Tube 20kpsi 920mm	9/16"UNF-LH
81401053	Barrel Tube 60kpsi 920mm	9/16"UNF-LH



\*Lances for any requirement included to customer's requirement max 7m (23ft)

1 Bar = 0.1 MPa

1 Bar = 14.5 psi

## HIGH PRESSURE RIGID LANCES

### UHP Lances Both End 9/16" UNF Left-Hand Male Connection

Part No.	Description	Size
81400954	9/16" LH CONED UHP LANCE	120mm
81401841	9/16" LH CONED UHP LANCE	180mm
81400820	9/16" LH CONED UHP LANCE	200mm
81400955	9/16" LH CONED UHP LANCE	250mm
81400989	9/16" LH CONED UHP LANCE	270mm
81401184	9/16" LH CONED UHP LANCE WITH SPANNER WIDTH	300mm
81400944	9/16" LH CONED UHP LANCE	350mm
81401837	9/16" LH CONED UHP LANCE WITH SPANNER WIDTH	370mm
81400990	9/16" LH CONED UHP LANCE	375mm
81400814	9/16" LH CONED UHP LANCE WITH SPANNER WIDTH	400mm
81401638	9/16" LH CONED UHP LANCE	420mm
81401785	9/16" LH CONED UHP LANCE WITH SPANNER WIDTH	450mm
81401997	9/16" LH CONED UHP LANCE WITH SPANNER WIDTH	450mm
81400821	9/16" LH CONED UHP LANCE WITH SPANNER WIDTH	500mm
81400945	9/16" LH CONED UHP LANCE	500mm
81401550	9/16" LH CONED UHP LANCE	550mm
81401916	9/16" LH CONED UHP LANCE WITH SPANNER WIDTH	570mm
81401073	9/16" LH CONED UHP LANCE	600mm
81401917	9/16" LH CONED UHP LANCE WITH SPANNER WIDTH	670mm
81402121	9/16" LH CONED UHP LANCE	700mm
81400601	9/16" LH CONED UHP LANCE WITH SPANNER WIDTH	735mm
81401671	9/16" LH CONED UHP LANCE WITH SPANNER WIDTH	750mm
81400946	9/16" LH CONED UHP LANCE	750mm
81400926	9/16" LH CONED UHP LANCE	800mm
81401075	9/16" LH CONED UHP LANCE	920mm
81400801	9/16" LH CONED UHP LANCE WITH SPANNER WIDTH	1000mm
81400939	9/16" LH CONED UHP LANCE	1000mm

9/16" LH



Without spanner width

9/16" LH



With spanner width

Lances for any requirement included to customer's requirement max 7m (23ft)

1 Bar = 0.1 MPa

1 Bar = 14.5 psi

## HIGH PRESSURE RIGID LANCES (continued from last page)

### UHP Lances Both End 9/16" UNF Left-Hand Male Connection

Part No.	Description	Size
81401760	9/16" LH CONED UHP LANCE WITH SPANNER WIDTH	1100mm
81401711	9/16" LH CONED UHP LANCE WITH SPANNER WIDTH	1200mm
81400802	9/16" LH CONED UHP LANCE WITH SPANNER WIDTH	1500mm
81400948	9/16" LH CONED UHP LANCE	1500mm
81400803	9/16" LH CONED UHP LANCE WITH SPANNER WIDTH	2000mm

Lances for any requirement included to customer's requirement max 7m (23ft)  
 1 Bar = 0.1 MPa  
 1 Bar = 14.5 psi

9/16" LH



Without spanner width

9/16" LH



With spanner width

## HIGH PRESSURE RIGID LANCES

### UHP Lances Both End 9/16" UNF Right-Hand Male Connection

Part No.	Description	Size
81401007	9/16" RH CONED UHP LANCE WITH SPANNER WIDTH	500mm
81400979	9/16" RH CONED UHP LANCE WITH SPANNER WIDTH	730mm
81401138	9/16" RH CONED UHP LANCE	735mm
81401514	9/16" RH CONED UHP LANCE WITH SPANNER WIDTH	750mm
81400847	9/16" RH CONED UHP LANCE	1000mm
81400980	9/16" RH CONED UHP LANCE WITH SPANNER WIDTH	2000mm

Lances for any requirement included to customer's requirement max 7m (23ft)  
 1 Bar = 0.1 MPa  
 1 Bar = 14.5 psi

9/16" RH



Without spanner width

9/16" RH



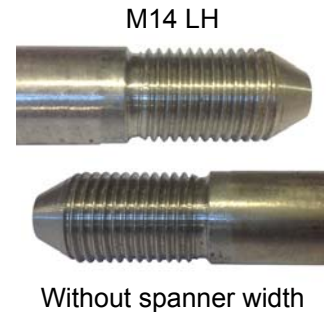
With spanner width



## HIGH PRESSURE RIGID LANCES

### UHP Lances Both End M14x1,5 Left-Hand Male Connection

Part No.	Description	Size
81400822	M14x1,5 LH CONED UHP LANCE	80mm
81401726	M14x1,5 LH CONED UHP LANCE WITH SPANNER WIDTH	100mm
81402098	M14x1,5 LH CONED UHP LANCE	200mm
81401933	M14x1,5 LH CONED UHP LANCE WITH SPANNER WIDTH	250mm
81401354	M14x1,5 LH CONED UHP LANCE	300mm
81401725	M14x1,5 LH CONED UHP LANCE WITH SPANNER WIDTH	300mm
81402020	M14x1,5 LH CONED UHP LANCE WITH SPANNER WIDTH	370mm
81402067	M14x1,5 LH CONED UHP LANCE WITH SPANNER WIDTH	400mm
81401996	M14x1,5 LH CONED UHP LANCE WITH SPANNER WIDTH	450mm
81400815	M14x1,5 LH CONED UHP LANCE	500mm
81401786	M14x1,5 LH CONED UHP LANCE WITH SPANNER WIDTH	570mm
81400646	M14x1,5 LH CONED UHP LANCE	750mm
81401688	M14x1,5 LH CONED UHP LANCE	850mm
81400949	M14x1,5 LH CONED UHP LANCE	1000mm
81402018	M14x1,5 LH CONED UHP LANCE WITH SPANNER WIDTH	1200mm
81402019	M14x1,5 LH CONED UHP LANCE WITH SPANNER WIDTH	1300mm
81401544	M14x1,5 LH CONED UHP LANCE	1400mm
81400950	M14x1,5 LH CONED UHP LANCE	1500mm
81401090	M14x1,5 LH CONED UHP LANCE	2000mm
81401937	M14x1,5 LH CONED UHP LANCE WITH SPANNER WIDTH	2500mm
81401091	M14x1,5 LH CONED UHP LANCE	3000mm



Lances for any requirement included to customer's requirement max 7m (23ft)

1 Bar = 0.1 MPa

1 Bar = 14.5 psi

## HIGH PRESSURE RIGID LANCES

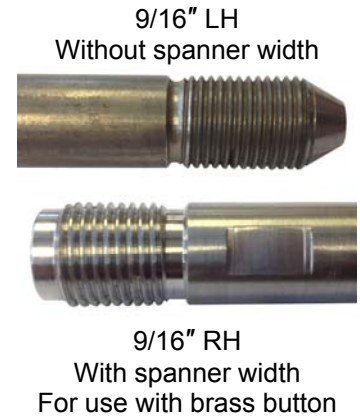
### UHP Lances 9/16" UNF Left-Hand - 9/16" UNF Right-Hand Male Connection

Part No.	Description	Size
81400956	LANCE 9/16" LH CONED - 9/16" RH BUTTON	100mm
81401125	LANCE 9/16" LH CONED - 9/16" RH BUTTON	200mm
81401124	LANCE 9/16" LH CONED - 9/16" RH BUTTON	500mm
81401359	LANCE 9/16" LH CONED - 9/16" RH BUTTON	530mm
81401146	LANCE 9/16" LH CONED - 9/16" RH BUTTON	1000mm
81400957	LANCE 9/16" LH CONED - 9/16" RH BUTTON	1400mm
81401379	LANCE 9/16" LH CONED - 9/16" RH BUTTON	1800mm

Lances for any requirement included to customer's requirement max 7m (23ft)

1 Bar = 0.1 MPa

1 Bar = 14.5 psi



## HIGH PRESSURE RIGID LANCES

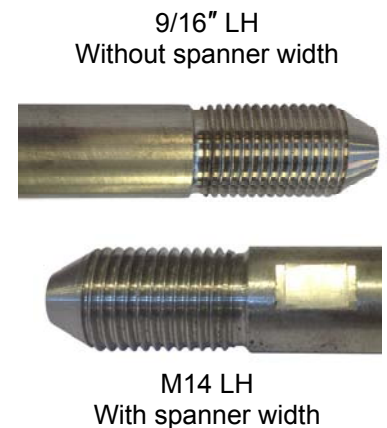
### UHP Lances 9/16" UNF Left-Hand - M14x1,5 Left-Hand Male Connection

Part No.	Description	Size
81400810	9/16" LH - M14 LH CONED - UHP LANCE	500mm
81401083	9/16" LH - M14 LH CONED - UHP LANCE	400mm
81401208	9/16" LH - M14 LH CONED - UHP LANCE	750mm
81401805	9/16" LH - M14 LH CONED - UHP LANCE	920mm
81401335	9/16" LH - M14 LH CONED - UHP LANCE	1000mm
81400995	9/16" LH - M14 LH CONED - UHP LANCE	1950mm

Lances for any requirement included to customer's requirement max 7m (23ft)

1 Bar = 0.1 MPa

1 Bar = 14.5 psi



## ACCESSORIES LOW & HIGH PRESSURE

### Couplings & Connections

Part No.	Description	Size
80500614	Quick Coupling F Alu. Low Pressure	Hose Nipple 1"
80500426	Quick Coupling Nipple M Alu. Low Pressure	1"BSPP F
80500848	Quick Coupling F Alu. Low Pressure	Hose Nipple 1 1/2"
80500847	Quick Coupling Nipple M Alu. Low Pressure	1 1/2"BSPP F
80500603	Quick Coupling M Brs-Zn	Hose Nipple 3/4" and 5/8"
80501066	Quick Coupling M Brs-Zn	Hose Nipple 1"
80500604	Quick Coupling F- Brs-Zn	3/4"BSPP F
80501065	Quick Coupling F- Brs-Zn	1"BSPP F
80500757	Quick Coupling Ball F 220 BAR	3/8"BSPP F
80500758	Quick Coupling M 220 bar	3/8"BSPP F
80500762	Quick Screw Coupling 1000Bar 80500764+80500763	1/2"-1/2" BSPP F-F
80500764	Quick Screw Coupling F	-1/2" BSPP F
80500763	Quick Screw Coupling M	-1/2" BSPP F
80500658	Quick Screw Coupling 700Bar	M24X1.5 Swivel – 1/2"BSPP M
80501021	Quick Screw Coupling 700Bar	M24X1.5 Swivel – 3/8"BSPP M
80501022	Quick Screw Coupling 700Bar	M24X1.5 Swivel – 3/8"BSPP F
80501031	Quick Screw Coupling 700Bar	M24X1.5 Swivel – 1/4"BSPP F
80500659	Screw Coupling* 700Bar	M24X1.5 M- 1/2"BSPP M
80501023	Screw Coupling* 700Bar	M24X1.5 M- 3/8"BSPP M
80500661	Screw Coupling* 700Bar	M24X1.5 M – 1/2"BSPP F
80500810	Screw Coupling* 700Bar	M24X1.5 M – 3/8"BSPP F
80501024	Screw Coupling* 700Bar	M24X1.5 M – 1/4"BSPP F

\*used with 80500658 , 80501021 , 80501022 , 80501031



## ACCESSORIES LOW & HIGH PRESSURE

### Couplings & Connections

Part No.	Description	Size
80500865	Quick Screw Coupling 250Bar	M22 X1.5 Swivel - 1/2" BSPP M
80500863	Quick Screw Coupling 250Bar	M22 X1.5 Swivel - 3/8" BSPP M
80500866	Screw Coupling Used with 80500863 & 80500865	M22X1.5 M- 1/2" BSPP M
80500864	Screw Coupling Max 560Bar Used with 80500863 & 80500865	M22X1.5 M- 3/8" BSPP M
80500932	Screw Coupling Max 560Bar Used with 80500863 & 80500865	M22X1.5 M- 1/2" BSPP F
80501040	Screw Coupling Max 560Bar Used with 80500863 & 80500865	M22X1.5 M- 3/8" BSPP F
80501038	Screw Coupling Max 600Bar Used with 80500863 & 80500865	M22X1.5 M- 1/4" BSPP F
80500858	Quick Coupling	3/4" BSPP F- 3/4" BSPP F



## ACCESSORIES LOW & HIGH PRESSURE

### Swivels

Part No.	Description	Size
81400973	Rotary Swivel UHP	M26 - 9/16"
81400981	Rotary Swivel UHP	1 1/8 UNF-9/16UNF
81400800	Swivel 1000 Bar	1/2"-1/2" BSPP M-M
81400988	Swivel 1000 Bar	1/2"BSPP M -F 90°
80500925	Swivel Elbow 1000 Bar	1/2" BSPP F-M 90°
80500929	Swivel Straight 1000 Bar	1/2" BSPP F-M
81401228	Swivel Straight 500 Bar	1/2" BSPP M-F
81401283	Swivel Straight 500 Bar	1/2" BSPP F-F
81401265	Swivel Straight 350 Bar	3/4" BSPP M-F
81401560	Swivel Elbow 350 Bar	3/4" BSPP M-F



## FITTINGS

### Nipples Stainless Steel High Pressure

Part No.	Size	Max. Pressure
80500675	1/8" BSPP 60° - 1/8" BSPP 60°	1400 Bar
80500651	1/4" BSPP 60° - 1/4" BSPP 60°	1400 Bar
80500654	1/4" BSPP 60° - 1/4" BSPT	1000 Bar
80500939	1/4" BSPP 60° - 1/4" NPT	1000 Bar
80500650	1/4" NPT - 1/4" NPT	1000 Bar
80500732	3/8" BSPP 60° - 1/4" BSPP 60°	1400 Bar
80500734	3/8" BSPP 60° - 3/8" BSPP 60°	1400 Bar
80501048	3/8" BSPP 60° - 3/8" NPT	1000 Bar
80500784	1/2" BSPP 60° - 1/8" BSPP 60°	1400 Bar
80500940	1/2" BSPP 60° - 1/4" BSPP 60°	1400 Bar
80500716	1/2" BSPP 60° - 3/8" BSPP 60°	1400 Bar
80500955	1/2" BSPP 60° - 3/8" NPT	1400 Bar
80500802	1/2" BSPP 60° - M18x1.5 60°	1400 Bar
80500375	1/2" BSPP 60° - 1/2" BSPP 60°	1400 Bar
80500669	1/2" BSPP 60° - 1/2" NPT	1000 Bar
80500736	1/2" NPT - 3/8" BSPP	1000 Bar
80501044	M22 x 1.5 24° - 1/4" NPT	1000 Bar
80500786	M22 x 1.5 24° - 1/4" BSPP 60°	1400 Bar
80500982	M22 x 1.5 24° - 3/8" NPT	1000 Bar
80500760	M22 x 1.5 24° - 1/2" BSPP 60°	1400 Bar
80500667	M22 x 1.5 24° - 1/2" NPT	1000 Bar
80500759	M22 x 1.5 24° - M22x1.5 24°	1400 Bar
80501043	M24 x 1.5 24° - 1/4" NPT	1000 Bar
80501045	M24 x 1.5 24° - 3/8" NPT	1000 Bar
80500961	M24 x 1.5 24° - 1/2" NPT	1000 Bar
80500657	M24 x 1.5 24° - 1/2" BSPP 60°	1400 Bar
80500841	M24 x 1.5 24° - M22x1.5 24°	1400 Bar
80500317	M24 x 1.5 24° - M24x1.5 24°	1400 Bar
80500921	M26 x 1.5 24° - M24x1.5 24°	1400 Bar
80500919	3/4" BSPP 60° - 1/2" BSPP 60°	1400 Bar
80500881	3/4" BSPP 60° - 3/4" BSPP 60°	1400 Bar
80500954	3/4" NPT - 3/8" NPT	1000 Bar
80500959	3/4" NPT - M24 x 1.5 24°	1000 Bar
80500780	1" NPT - 3/4" BSPP 60°	1000 Bar
80501000	1" NPT - 3/4" BSPP 60°	1000 Bar



Other nipples available to customer's requirement

## FITTINGS

### Nipples Stainless Steel High Pressure

Part No.	Size	Max. Pressure
80500901	M36 x 2 24° - 1/2" BSPP 60°	1000 Bar
80500962	M36 x 2 24° - 1/2" NPT	1000 Bar
80500935	M36 x 2 24° - M22x1.5 24°	1400 Bar
80500936	M36x2 24° - M24 x1.5 24°	1400 Bar
80501014	M36x2 24° - 3/4" NPT	1000 Bar
80500821	M36 x 2 24° - M36x2 24°	1000 Bar
80500872	1.1/4" BSPT- 1/2" BSPP 60°	1000 Bar
80500871	1.1/4" BSPT- 3/4" BSPP 60°	1000 Bar
80501016	1.1/4" BSPP- 1"NPT	1000 Bar
80501015	1.1/4" BSPP- 1.1/4"NPT	1000 Bar
80500999	1.1/4" NPT- 1"BSPP	1000 Bar
80501019	M42x2 24° - M36x2 24°	1000 Bar

Other nipples available to customer's requirement



## FITTINGS

### Connectors & Adaptors HP & UHP

Part No.	Description	Size
81300531	Adaptor UHP	9/16" UNF M 3/4" UNF F
81400605	Adaptor 1000Bar	3/8" BSPP F 1/2" BSPP M
81400663	Adaptor lance	13/16" UNF M 3/8" BSPP F
80500699	Adaptor rigid lance	M24x1,5 M 9/16" UNF F
80500700	Adaptor rigid lance	M22x1.5 M 9/16" UNF F
80500701	Adaptor rigid lance	1/2" BSPP 9/16" UNF F
80500702	Adaptor rigid lance	3/4" UNF F 9/16" UNF F
80500703	Adaptor rigid lance	3/8" UNF M M10x1 M
80500704	Adaptor rigid lance	3/8" UNF M M8x1 M
80500705	Adaptor rigid lance	3/8" UNF M 3/8" UNF M



Other adaptor available to customer's requirement



## FITTINGS

### Connectors & Adaptors HP & UHP

Part No.	Description/pressure	Size
80500597	Straight Connector 60 kpsi	1 1/8" UNF F-F
80500627	Straight Connector 60 kpsi	M30x2 F-F
80500635	Straight Connector 60 kpsi	M26x1.5 F-F
80500640	Straight Connector 60 kpsi	3/4" UNF F-F
80500902	Straight Connector 60 kpsi	M14x1.5 LH F-F
80500315	Straight Connector 60 kpsi	1 1/8" UNF M-M
80500314	Nipple Pipe 4" long 60 kpsi	9/16" UNF LH
80500321	Nipple Pipe 3" long 60 kpsi	3/8" UNF LH
80500724	Nipple Pipe 4" long 20 kpsi	9/16" UNF LH -1/4" BSPP
80500907	Nipple Adaptor 20 kpsi	13/16" UNF 60° -1/4" BSPP
80500733	Nipple Adaptor 20 kpsi	13/16" UNF 60° -3/8" BSPP
80500689	Nipple Adaptor 20 kpsi	13/16" UNF 60° -1/2" BSPP
80500731	Nipple Adaptor 20 kpsi	13/16" UNF 60° -M22x1.5
80500730	Nipple Adaptor 20 kpsi	13/16" UNF 60° -M24x1.5
80500639	Adaptor 60 kpsi	1 1/8" UNF M- 3/4" UNF F
81400602	Adaptor 60 kpsi	1 1/8" UNF F- 3/4" UNF M
80500803	Adaptor 60 kpsi	1 1/8" UNF M- M26X1.5 - F
80500722	Adaptor 60 kpsi	1 1/8" UNF M- M30X2 - F
80500891	Adaptor 20 kpsi	1 1/8" UNF M- 13/16" UNF F
80500318	Nipple Adaptor 20 kpsi	1 1/8" UNF M- M24 x1.5 BSPP M
80500887	Nipple Adaptor 20 kpsi	1 1/8" UNF M- 1/2" BSPP M
80500937	Nipple Adaptor 20 kpsi	1 1/8" UNF M- M22 x1.5 BSPP M
80500671	Cross UHP	4 x 1 1/8" UNF F
80501088	Cross UHP	4 x M26 F
81400374	Y Connector UHP	3 x 1 1/8" UNF F
80500726	Tee UHP	3 x 13/16" UNF F
80500715	Tee UHP	3 x 1 1/8" UNF F
80501087	Tee UHP	3 x M26 F
80501086	ELBOW UHP	2 x M26 F



Other adaptor available to customer's requirement  
 1 Bar = 0.1 MPa  
 1 Bar = 14.5 psi

## FITTINGS

### Collar & Gland Nut

Part No.	Description	Size
80500040	Collar 20kpsi	9/16"UNF LH for 80500041 G.N.
80500889	Collar 20kpsi	M14x1,5 LH for 80500041 G.N.
80500041	Gland Nut 20kpsi	13/16"UNF for 80500040 Collar
80500717	Gland Nut With Support 20kpsi	13/16"UNF for 80500040 Collar
80500950	Gland Nut 20kpsi	1/2" BSPP for 80500040 Collar
80500842	Collar 60 kpsi	1/4" UNF LH for 80500843 G.N.
80500843	Gland Nut 60kpsi	9/16"HNF for 80500842Collar
80500593	Collar 60 kpsi	3/8"UNF LH for 80500594 G.N.
80500594	Gland Nut 60kpsi	3/4"UNF for 80500593 Collar
80500632	Collar 60kpsi	9/16"UNF LH for 80500631 G.N.
80500822	Collar 60kpsi	M14x1.5 LH for 80500631 G.N.
80500631	Gland Nut 60kpsi	1.1/8"UNF for 80500632 Collar
80500633	Collar 60kpsi Small	M14 LH for 80500634 G.N.
80500823	Collar 60kpsi	9/16"UNF LH for 80500634 G.N.
80500634	Gland Nut 60kpsi	M26 for 80500633 Collar
80500628	Collar 60kpsi	M14 LH for 80500629 G.N.
80500629	Gland Nut 60kpsi	M30 for 80500628 Collar
80500791	Collar with Support 60kpsi	9/16" UNF LH for 80500790 G.N.
80500790	Gland Nut with Support 60kpsi	M26 for 80500791 Collar
80500698	Gland Nut NLB	1 1/8"UNF-F for 80500632 Collar



### Plugs HP & UHP

Part No.	Description	Size
80500643	Plug Hex SS	3/8" NPT F
80500598	Plug Hex SS	3/8" BSPP M
80500617	Plug Hex SS	1/2" BSPP M
80500496	Plug Hex SS	3/4" BSPP M
80500612	Plug Hex SS UHP	1.1/8" UNF M



1 Bar = 0.1 MPa  
1 Bar = 14.5 psi

## GAUGES & FILTERS

### Gauges H.P

Part No.	Description	Size
81300497	Gauge HP 1600 Bar	Ø4" Radial Bottom 1/2" BSP M
81300620	Gauge HP 1000 Bar	Ø2,5" Radial Bottom 1/4" BSP M
81300621	Gauge HP 600 Bar	Ø2,5" Radial Bottom 1/4" BSP M
81300821	Gauge HP 600 Bar	Ø2,5" Axial Back 1/4" BSP M
81300767	Gauge HP* 4000 Bar	Ø4" Radial 9/16" UNF LH M
81300592	Gauge HP** 4000 Bar	Ø6" Radial 1/2" BSP M
81300655	Gauge Converter** 10 to 1	3/8 UNF F LH 1/2" BSPP F



\*Gauge is used with collar and gland nut

\*\* Gauge and gauge converter should be used together

## GAUGES & FILTERS

### Gauges L.P

Part No.	Description	Size
81300631	Gauge LP 20 Bar	Ø42 mm Axial Back 1/8" BSP M



### Filters

Part No.	Description	Size
81000647	Filter	9 3/4"
81000648	Filter	19 1/2"
81000523	Filter Cartridge	9 3/4"
81000616	Filter Cartridge	19 1/2"
81000813	Bag Filter (housing)	Ø140 x 700mm
81000821	Filter Bag	100micron
81401349	Filter Bag Roof Cleaner	



### Float Valves

Part No.	Description	Size
81000428	Float Valve	1"BSPP Inlet 6"Ball
81000602	Float Valve	3/4" BSPP Inlet 4"Ball
81000876	Float Valve	1 1/2" BSPP Inlet 2 x 6" Ball



## HIGH PRESSURE HOSES

### T-Connector Ball valve Assembly for Stationary Pipe Line

Part No.	Description	Size
81400715	T-connector Ball Valve SS 500Bar	1/2" BSPP M-M-M
81400721	T-connector Ball Valve SS 800Bar	1/2" BSPP M-M-M
81400840	T-connector Ball Valve SS 800Bar Blind End	1/2" BSPP M-M



### Hose End Protection

Part No.	Description	Size
81400746	Protection Cap	1 1/8" UNF F For 9/16" Hose End
81400756	Protection Cap	M30 F For M14 Hose End
81400935	Protection Cap	M26 F For M14 Hose End
81400937	Protection Plug	M26 M



### Hose Reel

Part No.	Description	Size
81401172	Hose Reel Manual SS 500Bar	Inlet & Outlet 1/2"BSPP 3/8" Hose 50m
81401788	Hose Reel Manual SS 200Bar	Inlet & Outlet 1/2"BSPP 3/8" Hose 70m
81401114	Hose Reel Recoil SS 250Bar	Inlet & Outlet 1/2"BSPP 3/8" Hose 20m
81401356	Hose Reel Recoil SS 250Bar	Inlet & Outlet 1/2"BSPP 3/8" Hose 40m
81401311	Hose Reel Hydraulic SS 500Bar	Inlet & Outlet 1/2"BSPP 3/8" Hose 100m
81401357	HOSE REEL 12V EL SS 500BAR	Inlet & Outlet 1/2"BSPP 3/8" Hose 100m
81401244	Hose Reel Recoil MS Painted 250Bar	Inlet & Outlet 1/2"BSPP 3/8" Hose 15m
81401396	Hose Reel Recoil MS Painted 250Bar	Inlet & Outlet 1/2"BSPP 3/8" Hose 20m
81401404	Hose Reel Manual SS 500 Bar	Inlet & Outlet 1/2"BSPP 3/8" Hose 150m
81401483	Hose Reel Manual SS 500 Bar	Inlet & Outlet 1/2"BSPP 1/2" Hose 50m
81401637	Hose Reel Recoil SS 4000Bar	Inlet & Outlet 1/2"BSPP 1/2" Hose 40m



## HIGH PRESSURE HOSES

### Hose Reel

Part No.	Description	Size
81401245	Bracket Hose Reel	MS 15M
81401246	Bracket Hose Reel	SS 20M
81401247	Bracket Hose Reel	SS 35M



### HP Hoses With Same Size Swivel Nut Female Both Ends

Part No.	Description		
81400865	560 Bar	Ø1/4" - 10 Meter	2X1/4"BSPP
81401147	1800 Bar	DN5 - 20 Meter	2X1/4"BSPP
81401026	560 Bar	DN10 - 25 Meter	2X3/8"PSPP
81401047	560 Bar	DN10 - 10 Meter	2X1/2"BSPP
81400962	560 Bar	DN10 - 20 Meter	2X1/2"BSPP
81400963	1100 Bar	DN12 - 20 Meter	2X1/2"BSPP
81400776	1250 Bar	DN10 - 20 Meter	2X1/2"BSPP
81401074	1250 Bar	DN10 - 50 Meter	2X1/2"BSPP
81401102	1400 Bar	DN12 - 20 Meter	2X1/2" BSPP
81400968	420 Bar	Ø3/4" - 30 Meter	2X3/4"BSPP
81400986	1250 Bar	DN10 - 20 Meter	2XM22
81401065	1250 Bar	DN10 - 30 Meter	2XM22
81400842	1000 Bar	DN10 - 20 Meter	2XM24X1.5
81401110	1100 Bar	DN12 - 10 Meter	2XM24X1.5
81400966	1100 Bar	DN12 - 20 Meter	2XM24X1.5
81400985	1100 Bar	DN12 - 25 Meter	2XM24X1.5
81401097	1100 Bar	DN12 - 40 Meter	2XM24X1.5
81400978	1250 Bar	DN10 - 20 Meter	2XM24X1.5
81401019	1000 Bar	Ø3/4" - 20 Meter	2XM36
81401149	1000 Bar	Ø3/4" - 25 Meter	2XM36



## HIGH PRESSURE HOSES

### HP Sewer Hoses With Same Size Swivel Nut Both Ends

Part No.	Description		
81401134	250 Bar	Ø3/4" 50 Meter	2X3/4"BSPP
81400998	250 Bar	Ø3/4" 150 Meter	2X3/4"BSPP
81400866	350 Bar	Ø3/4" 25 Meter	2X3/4"BSPP



### HP Hoses Different Size Swivel Nut

Part No.	Description		
81401064	560 Bar	DN10 -20 Meter	1/2"BSPP-3/8"BSPP

### Tube Cleaning Hoses Swivel Nut – Male connection

Part No.	Description		
81401135	1200 Bar	DN4-20 Meter	1/4"BSPP SW-M7 M
81400798	1000 Bar	DN5-25 Meter	1/4"BSPP SW-M7 M
81400808	1000 Bar	DN5-10 Meter	1/4"BSPP SW-1/8"BSPP M
81401654	1000 Bar	DN5-15 Meter	1/4"BSPP SW-1/8"BSPP M
81402072	1000 Bar	DN6-15 Meter	1/4"BSPP SW-1/8"BSPP M
81401096	1000 Bar	DN6-10 Meter	1/4"BSPP SW-1/4"BSPP M
81401113	1000 Bar	DN6-15 Meter	1/4"BSPP SW-1/4"BSPP M
81401120	1000 Bar	DN6-50 Meter	1/4"BSPP SW-1/4"BSPP M
81401971	1200 Bar	DN4-20 Meter	1/4"BSPP SW-1/8"BSPP M
81401100	1000 Bar	DN10-20 Meter	3/8"BSPP SW-3/8"BSPP M
81400872	1200 Bar	DN4-10 Meter	M24 SW – M8 M
81400873	1000 Bar	DN5-10 Meter	M24 SW – M8 M



### HP Hoses Male - Male Ends

Part No.	Description		
81401039	560 Bar	DN 10 -20 Meter	2X3/8"BSPP M
81401066	560 Bar	DN 10 -20 Meter	3/8"BSPP M – M22/Ø14 SW.

Other lengths available to customer's requirement

## HIGH PRESSURE HOSES

### UHP Hoses Both End 9/16"UNF Left-Hand Male Connection

Part No.	Description		
81400765	2500 Bar	DN8-5M	2 X 9/16"UNF
81400769	3000 Bar	DN8-5M	2 X 9/16"UNF
81400766	2500 Bar	DN8-10M	2 X 9/16"UNF
81400770	3000 Bar	DN8-10M	2 X 9/16"UNF
81400760	3000 Bar	DN8-15M	2 X 9/16"UNF
81400632	2500 Bar	DN8-20M	2 X 9/16"UNF
81400648	3000 Bar	DN8-20M	2 X 9/16"UNF
81400650	2100 Bar	DN8-20M	2 X 9/16"UNF
81400767	2500 Bar	DN8-25M	2 X 9/16"UNF
81400771	3000 Bar	DN8-25M	2 X 9/16"UNF
81400797	2100 Bar	DN8-25M	2 X 9/16"UNF
81400796	2100 Bar	DN8-50M	2 X 9/16"UNF
81401148	2500 Bar	DN8-50M	2 X 9/16"UNF
81400768	2500 Bar	DN8-50M	2 X 9/16"UNF
81400772	3000 Bar	DN8-50M	2 X 9/16"UNF
81400701	2500 Bar	DN5-10M	2 X 9/16"UNF
81400709	2500 Bar	DN5-20M	2 X 9/16"UNF
81400703	2800 Bar	DN5-20M	2 X 9/16"UNF
81400835	4000 Bar	DN5-20M	2 X 9/16"UNF



### Hoses Swivel Elbow 3/8"BSPP- Male 3/8"BSPP

Part No.	Description		
81401294	560 Bar	Ø3/8"-50M	Black
81401430	560 Bar	Ø3/8"-50M	Blue-Mark Free



### Hoses Both End Male 3/8"BSPP

Part No.	Description		
81401497	560 Bar	Ø3/8"-25M	Blue
81401447	400 Bar	Ø3/8"-25M	Ball Blue

1 Bar = 0.1 MPa

1 Bar = 14.5 psi

Other lengths available to customer's requirement



## HIGH PRESSURE HOSES

### UHP Hoses Both End 3/8"UNF Left-Hand Male Connection

Part No.	Description		
81400795	2800 Bar	DN5- 5M	2 X 3/8"UNF
81400702	2500 Bar	DN5- 5M	2 X 3/8"UNF
81401011	2500 Bar	DN5-7M	2 X 3/8UNF
81400836	2800 Bar	DN5- 7M	2 X 3/8"UNF
81400748	2500 Bar	DN5-10M	2 X 3/8"UNF
81400723	2500 Bar	DN5-20M	2 X 3/8"UNF
81400647	2800 Bar	DN5-20M	2 X 3/8"UNF



### UHP Hoses Both End M14x1.5 Left-Hand Male Connection

Part No.	Description		
81400710	1500 Bar	DN8-20M	2 X M14x1,5
81400657	2500 Bar	DN8-20M	2 X M14x1,5
81400741	3000 Bar	DN8-20M	2 X M14x1,5
81400751	2500 Bar	DN5-5M	2 X M14x1,5
81400817	2500 Bar	DN5-10M	2 X M14x1,5
81400972	2500 Bar	DN5-20M	2 X M14x1,5



### UHP Hoses 9/16"UNF - 3/8"UNF Left-Hand Male Connection

Part No.	Description		
81400635	2500 Bar	DN5-7M	9/16-3/8UNF
81400633	2500 Bar	DN5-10M	9/16-3/8UNF
81400634	2500 Bar	DN5-12M	9/16-3/8UNF



### UHP Hoses Both Ends 1/4"UNF Left Hand Male Connection

Part No.	Description		
81400992	2500 Bar	DN4-12M	2X1/4"-28UNF

### HP Hoses Tube Cleaning

Part No.	Description		
83400642	1000 Bar	DN5 - *M	2240D
83400643	1200 Bar	DN4 - *M	2240D
83400644	1100 Bar	DN6 - *M	2240D
83400645	1400 Bar	DN12 - *M	2580N



\* length to customer's requirement

## SAFETY PROTECTION

### Safety Clothing\*

Part No.	Description	Size
81600594	Safety Boots Primo 800 bar	42/8UK
81600592	Safety Boots Primo 800 bar	43/9UK
81600595	Safety Boots Primo 800 bar	44/10UK
81600593	Safety Boots Primo 800 bar	45/11UK
81600596	Safety Boots Primo 800 bar	46/12UK
81600620	Safety Boots Primo 800 bar	48
81600670	Safety Boots Ultra 1200 bar	43/9 UK
81600671	Safety Boots Ultra 1200 bar	44/10 UK
81600666	Safety Boots 3000 bar	43
81600601	Safety Helmet Complete with Visor and Earmuffs	
81600611	Gaiters 2000/3000bar	
81600602	Safety Jacket 1000/2800 bar w/Hand Protection	L/XL
81600654*	Safety Jacket 200/500 bar front protection w/Hat	L
81600655*	Safety Jacket 200/500 bar front protection w/Hat	XL
81600605	Hand Protection Left 1000/2800 bar	
81600606	Hand Protection Right 1000/2800 bar	
81600644	Trousers 1000/2800 bar	L/XL
81600646*	Trousers 2000/3000 bar	L/XL
81600656*	Trousers 200/500 bar	L
81600657	Trousers 200/500 bar	XL
81600609	Watertight Overall	XL
81600632	Watertight Overall	L
81600658*	Overall 200/500 bar front protection W/Hood	XL
81600610	Delta Kit 2000/3000 bar	L/XL
81600624	Gamma Kit 1000/2800 bar	XL
81600650	Sigma kit 1000/2800 bar	L
81600665	Apron 200/500 bar	

\*Other size are available (XS,S,M,L,XL,2XL,3XL)

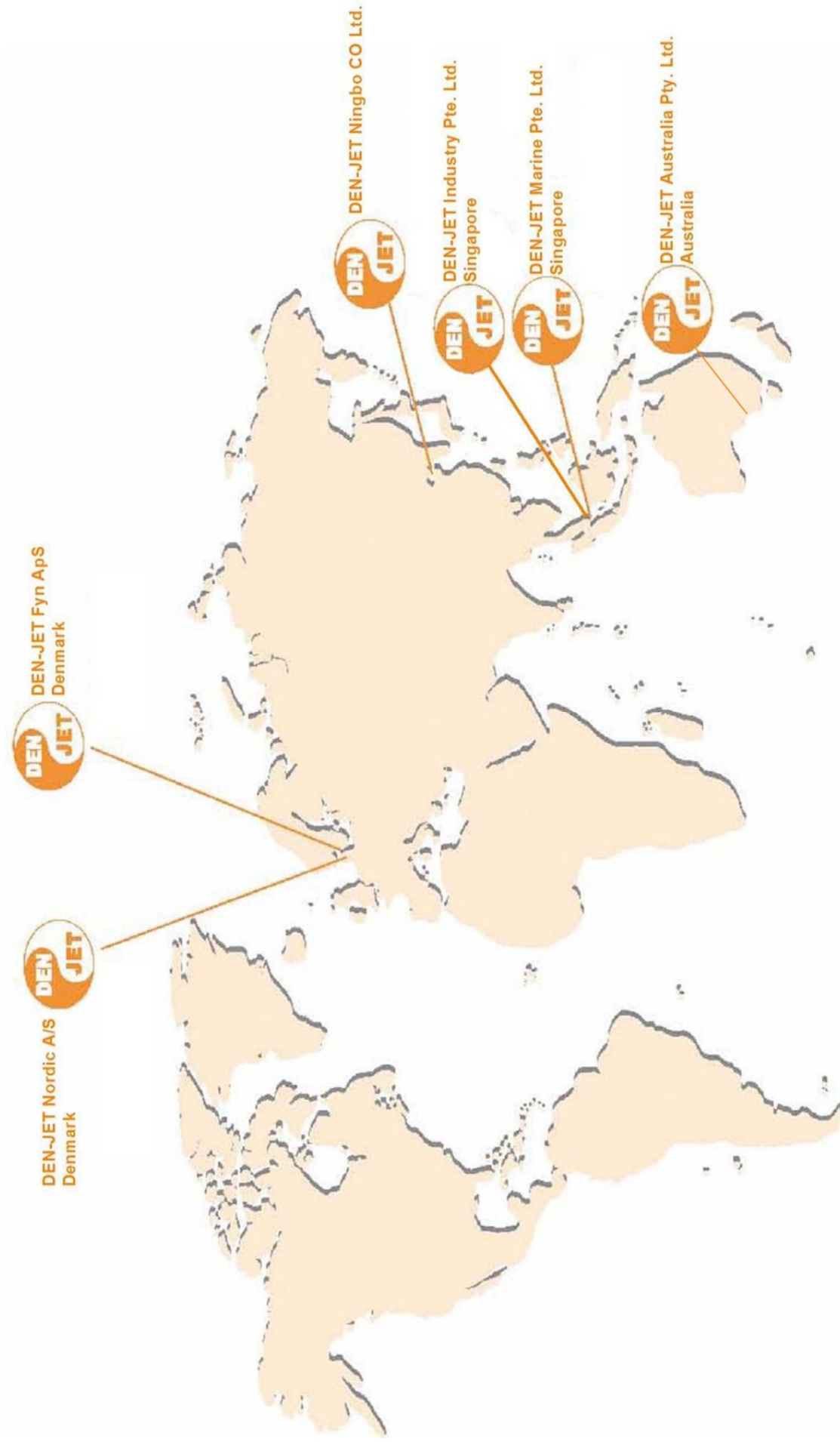


### Safety & Service Equipment

Part No.	Description	Size
81401260	Containment Grip	DN05-DN08
81400852	Safety Wire	Universal
81600626	Hose Protection	0.75m Ø36
81600627	Hose Protection	0.75m Ø59
81600617	Hose Protection	1.4m Ø36
81600616	Hose Protection	1.4m Ø59
81600614	Hose Protection	1.8m Ø36
81600618	Hose Protection	1.8m Ø59
83600603	Pump Oil	5 L
83600870	Motor Oil 10W-40	5 L







DEN-JET NORDIC A/S - Terndrupvej 7, Astrup 9510 Arden Denmark  
Tel :+45 98 55 88 68 Fax: +45 98 55 88 18 Web: [www.denjet.com](http://www.denjet.com); e-mail: [denjet@denjet.com](mailto:denjet@denjet.com)